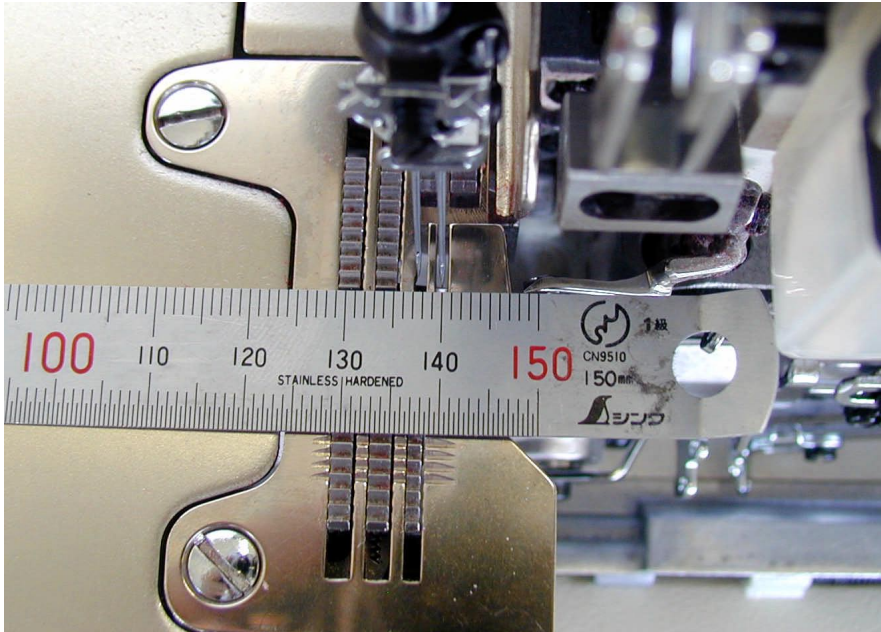


# The Wide Seam "2x7mm" Overedger!

**MX5214-03/633-2x7/Y1830**

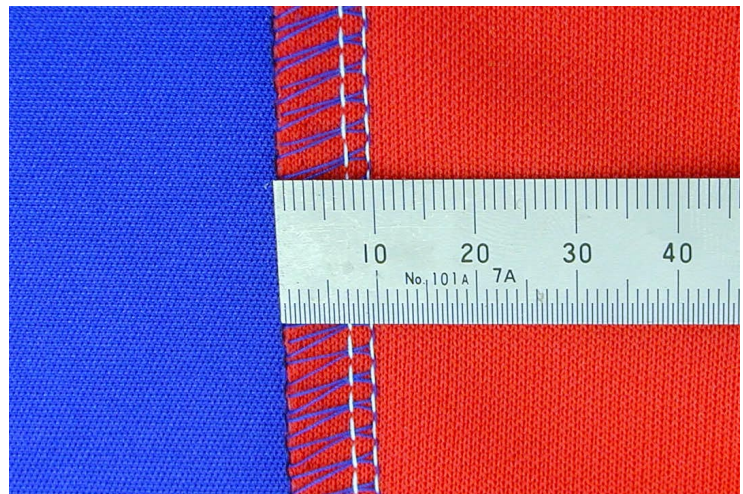


Wide seam type, 2-needle overedger

Thanks to the sewing width of 9 mm, this machine is suitable for the sewn product which needs top-stitch operation after the joining shoulder and/or attaching sleeve.

## Specification

No. of needles: 2  
 No. of threads: 4  
 Overedge width: 9mm  
 Stitch length: 0.6 - 3.8mm  
 Diff. feed ratio: 1:0.7-1:2  
 Presser foot lift: 5mm  
 Max. machine speed: 6,500rpm



## PEGASUS SEWING MACHINE PTE. LTD.

300 Beach Road #29-06, The Concourse Singapore 199555  
 TEL: 65-6296-3638 FAX: 65-6297-2353  
 e-mail: info@pegasus.com.sg

## PEGASUS SEWING MACHINE MFG. CO., LTD.

5-7-2, Sagisu, Fukushima-ku, Osaka 553-0002 JAPAN  
 TEL: 06-6458-4739 FAX: 06-6454-8785